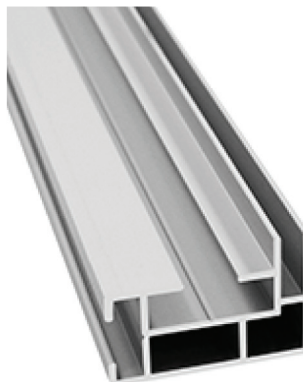


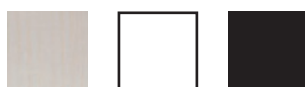
# HEAVY 27

Wallmount textile frame

NF-04270	Silver
NF-56270	White
NF-21270	Black



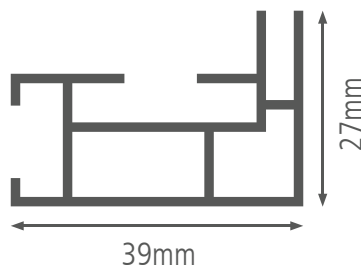
## Colors:



Silver White Black

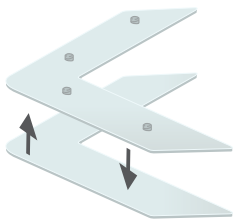
Available in every color on request.

<b>Application:</b>	Wallmount
<b>Width:</b>	27mm
<b>Length:</b>	6150mm
<b>Weight:</b>	0,677 kilo/meter
<b>Option:</b>	Sound absorbing felt



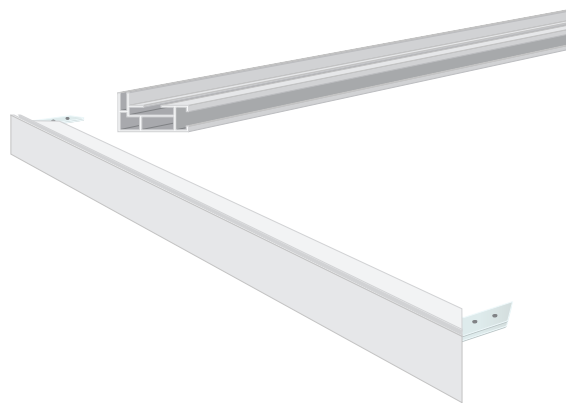
Single-sided aluminium textile frame, used for wall mounting. This is a very popular and widely applicable aluminum frame. With an extension set any size possible. This profile is usually mounted on the wall, in exhibition stands or interior integrated.

- Suitable for textile printing silicone strip
- Fast wall mounting and reinforcement by heavy lockset
- Wall mounting with heavy wallmount and / or pierce the profile
- Stabilizers for optimum reinforcement
- Ceiling hanger for hanging



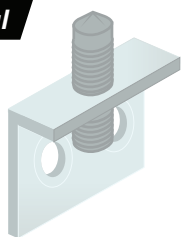
### FK-0200

Each frame is delivered with 8 locksets heavy.



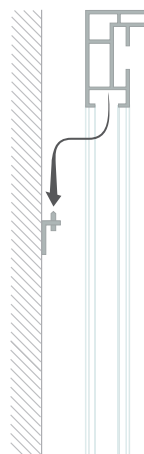
When connecting the frame, first place the lockset (FK-0200) without the punchholes, then the one with punchholes.

### Optional

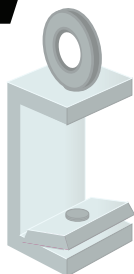


### FK-0400 / FK-0410

These wallmounts can be placed under the frame to hang the frame on the wall.

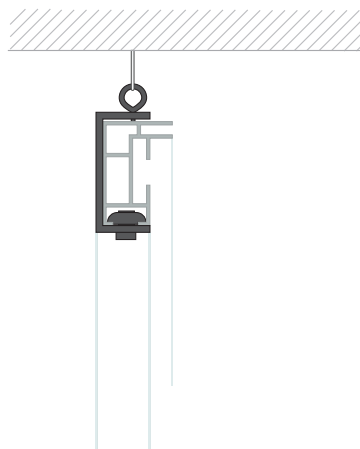


### Optional

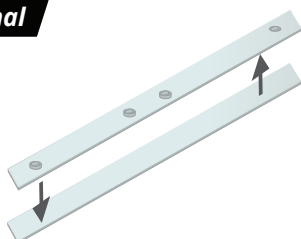


### FK-0425

Suspended from ceiling

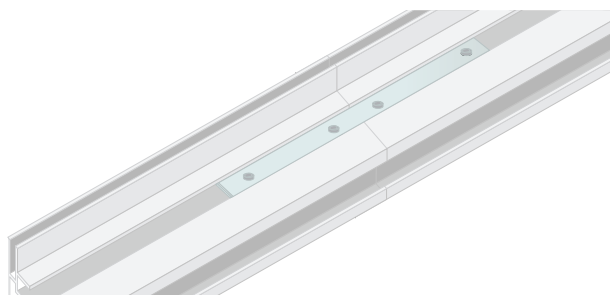


### Optional



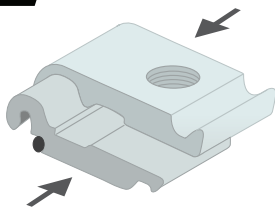
### FK-0500

If the length of the frame is longer than 4 meters, an extension set (FK- 0500) is included.



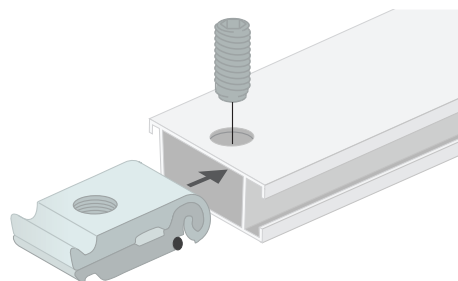
These extension sets can be placed in the channels where the frame is cut in half.

**Optional**



### FK-0220

When connecting the stabilizer, first place the lockset in the channel.



Then put the stabilizer (NF- 04438) on the lockset, now tighten the screw with the delivered allen key.



Place the textile print in the frame. Start with the corners and press the silicone strip in the channel.

