

LIGHTBOX 90 CLOSED

Wallmount, standing and hanging textile ledframe

NF-04905 Silver

NF-21905 Black

NF-56905 White

Colors:



Silver



Black



White

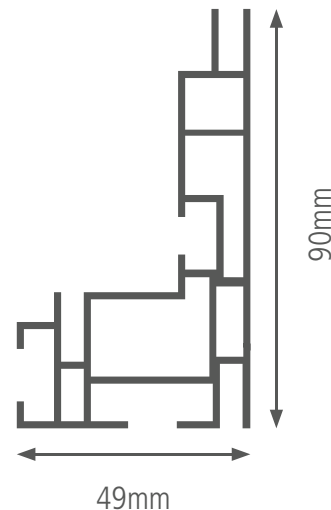
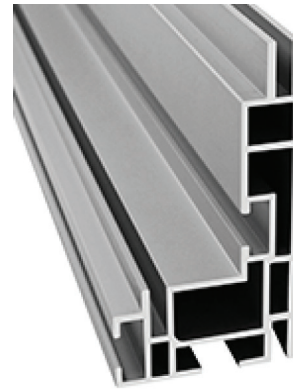
Available in every color on request.

- Application:** Wallmount, freestanding, suspended from ceiling
- Width:** 90mm
- Length:** 6150mm
- Weight:** 1,934 kilo/meter
- Option:** Sound absorbing felt in combination without LED's
- Advised:** White backing for the better reflection of the light
- Possibilities:** By LED on stabilizer is any size possible
- Lumen per m1:** 1980



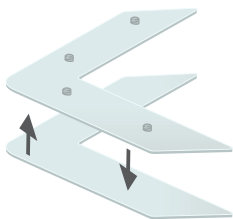
Marking

Including **PHILIPS**
patents license



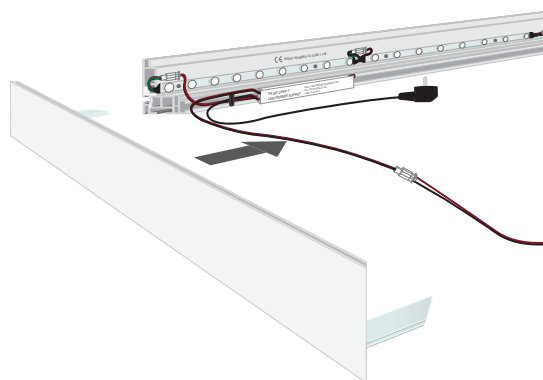
This aluminum profile is specifically designed for illuminating large format textile printing. With a smart design with multi-channel profile is this frame suitable for wall mounting as well as for standing and hanging solutions. Combined with our High PowerLED modules perfect wall light arises.

- Suitable for textile printing silicone strip
- Suitable for High PowerLED module
- Stabilizers for optimum reinforcement
- Various accessories for wallmounting, standing or hanging
- Disassembled transport possible, any size possible

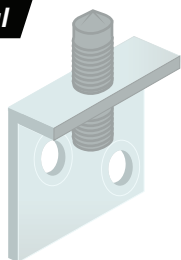


FK-0200

Each frame is delivered with 4 locksets heavy.

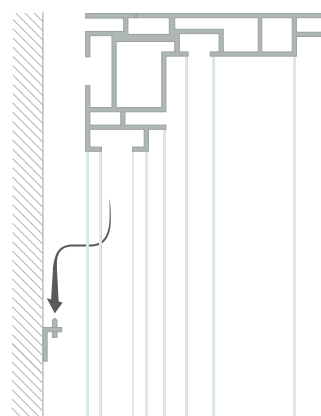


Optional

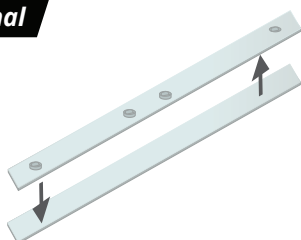


FK-0410

These wallmounts can be placed under the frame to hang the frame on the wall.

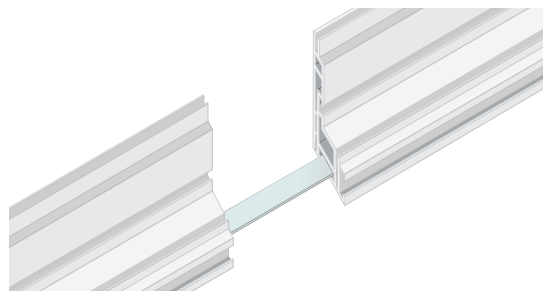


Optional



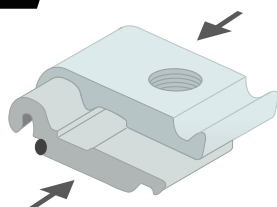
FK-0500

If the length of the frame is longer than 4 meters, an extension set (FK- 0500) is included.



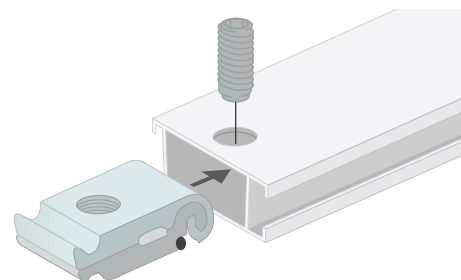
These extension sets can be placed in the channels where the frame is cut in half.

Optional



FK-0220

When connecting the stabilizer, first place the lockset in the channel.

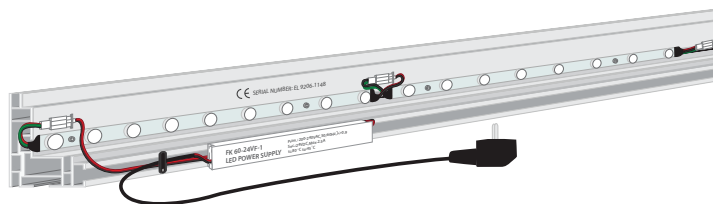


Then put the stabilizer (NF- 04438) on the lockset, now tighten the screw with the delivered allen key.

Optional

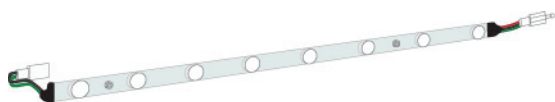


LED POWER SUPPLY
200-240V

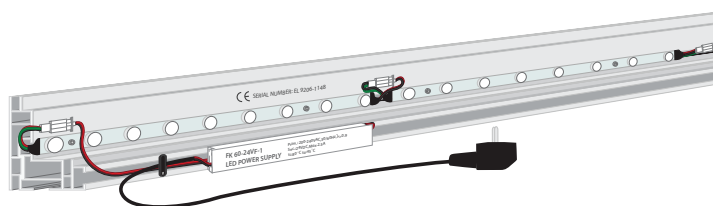


Sec.: 24VDC, Max 2.5A
tc: 80° ta: 45°C

Optional

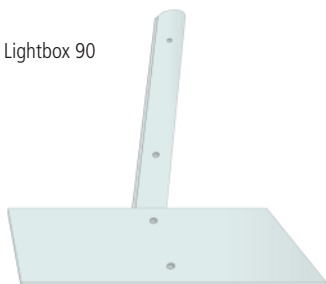


HEAVY POWERLED
47cm x 25mm x 15mm. 5000-7000k White.
9x lenses 2.8W 24V.

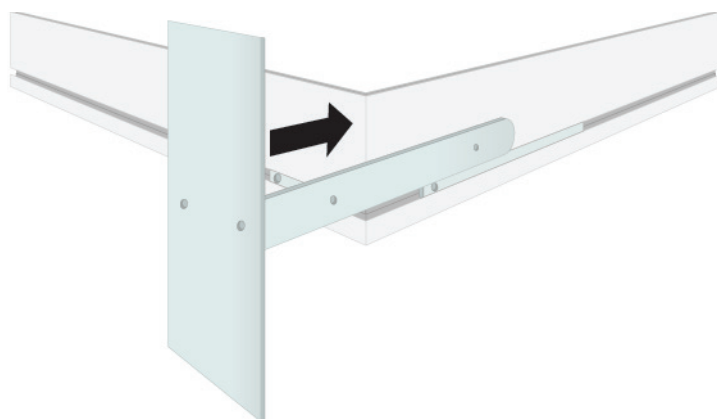


Optional

In combination with the Lightbox 90



FK-0120 / FK-0130
Footplate for standing. Material: Steel.

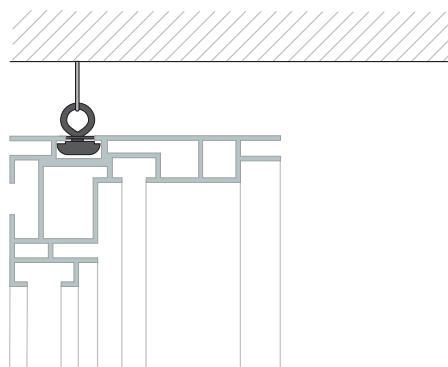


Optional

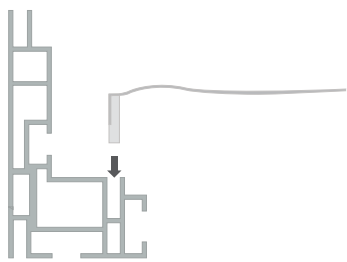
In combination with the Lightbox 90



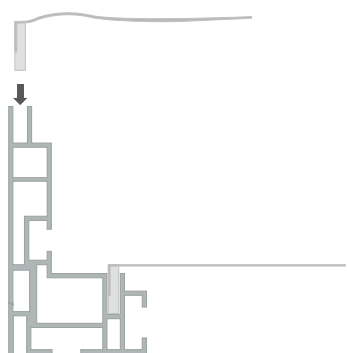
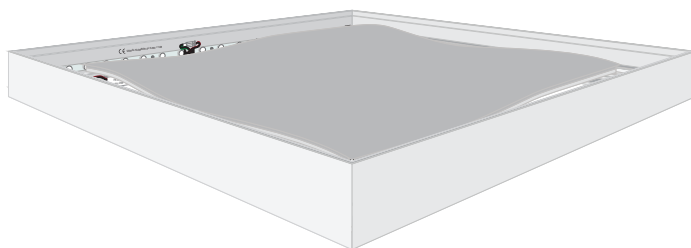
FK-0360
Suspended from ceiling.



Optional



BLOCK-OUT FABRIC



Place the textile print in the frame. Start with the corners and press the silicone strip in the channel.

