

TEXTILE FRAMES

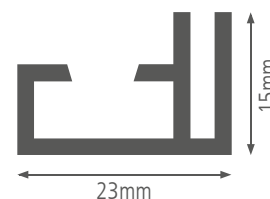


Eco 15

NF-04150 Silver
NF-21150 Black
NF-04150PH Silver

Single-sided aluminum profile

Application: Wall mount
Depth: 15mm
Length: 6150mm
Weight: 286 gram/meter
Option: Therm Acoustic D20/10
Color:

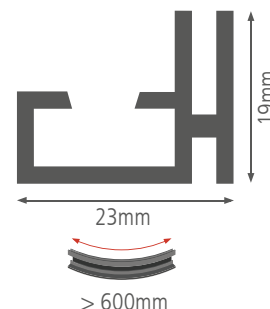


Simple 19

NF-04190 Silver
NF-21190 Black
NF-56190 White
NF-04190PH Silver
NF-21190PH Black
NF-56190PH White

Single-sided aluminum profile

Application: Wall mount
Depth: 19mm
Length: 6150mm
Weight: 318 gram/meter
Option: Therm Acoustic D20/10
Color:

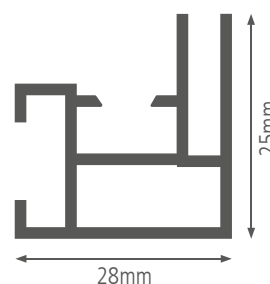


Slim 25

NF-04250 Silver
NF-21250 Black
NF-56250 White

Single-sided aluminum profile

Application: Wall mount
Depth: 25mm
Length: 6150mm
Weight: 476 gram/meter
Option: Therm Acoustic D20/25
Color:

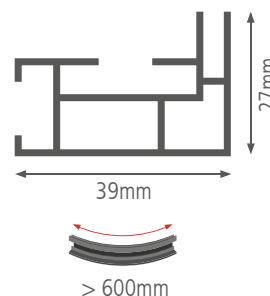


Heavy 27

NF-04270 Silver
NF-21270 Black
NF-56270 White

Standard aluminum profile

Application: Wall mount
Depth: 27mm
Length: 6150mm
Weight: 677 gram/meter
Option: Therm Acoustic D20/25
Color:

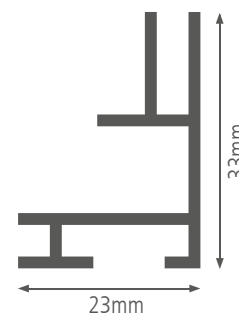


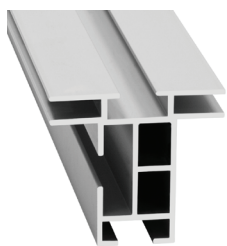
Slim 33

NF-04330 Silver

Single-sided aluminum profile

Application: Wall mount
Depth: 33mm
Length: 6150mm
Weight: 472 gram/meter
Option: LED Guided Plate
Color:





Double 44

NF-04440 Silver
NF-21440 Black
NF-56440 White

Single-sided aluminum profile

Application: Freestanding / Suspended

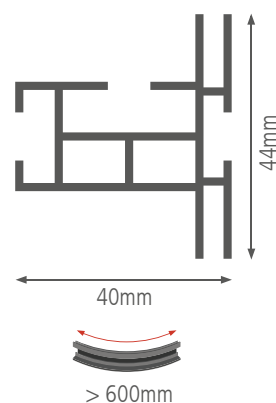
Depth: 44mm

Length: 6150mm

Weight: 785 gram/meter

Option: Therm Acoustic D40/40

Color:



Double 44 Closed

NF-04445 Silver
NF-21445 Black
NF-56445 White
NF-03445 Brushed

Double-sided aluminum profile

Application: Freestanding / Suspended

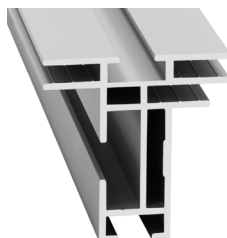
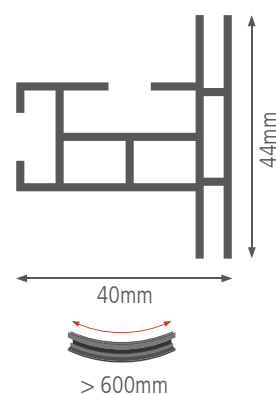
Depth: 44mm

Length: 6150mm

Weight: 815 gram/meter

Option: Therm Acoustic D40/40

Color:



Double 49

NF-04490 Silver
NF-21490 Black
NF-56490 White

Double-sided aluminum profile

Application: Freestanding / Suspended

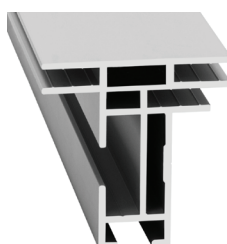
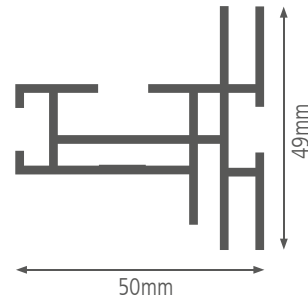
Depth: 49mm

Length: 6150mm

Weight: 1155 gram/meter

Option: Block-out

Color:



Double 49 Closed

NF-04495 Silver
NF-21495 Black
NF-56495 White

Double-sided aluminum profile

Application: Freestanding / Suspended

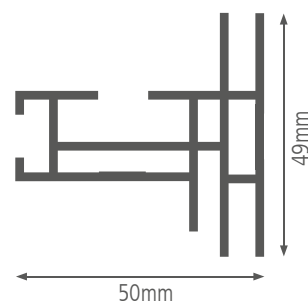
Depth: 49mm

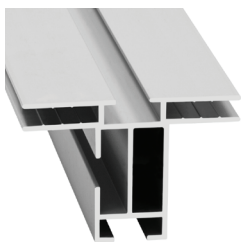
Length: 6150mm

Weight: 1171 gram/meter

Option: Block-out

Color:





Double 50

NF-04510 Silver
NF-21510 Black
NF-56510 White

Double-sided aluminum profile

Application: Freestanding / Suspended

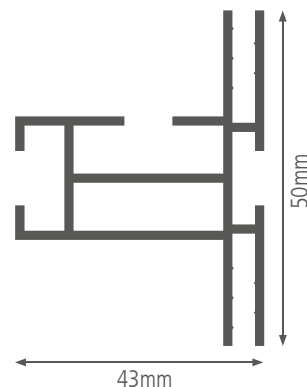
Depth: 50mm

Length: 6150mm

Weight: 987 gram/meter

Option: Therm Acoustic D40/40

Color: 



Double 50 Closed

NF-04515 Silver
NF-21515 Black
NF-56515 White

Double-sided aluminum profile

Application: Freestanding / Suspended

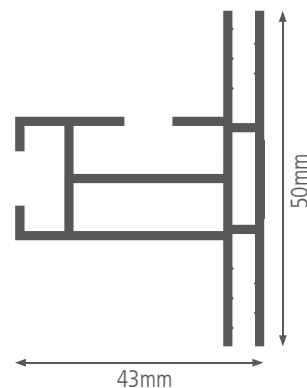
Depth: 50mm

Length: 6150mm

Weight: 1039 gram/meter

Option: Therm Acoustic D40/40

Color: 



Double 80

NF-04800 Silver
NF-21800 Black
NF-56800 White

Double-sided aluminum profile

Application: Freestanding / Suspended

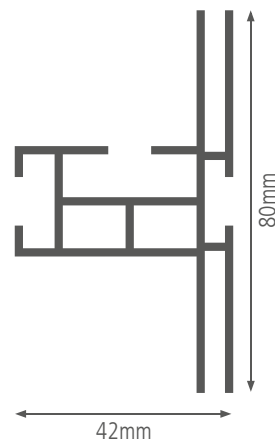
Depth: 80mm

Length: 6150mm

Weight: 1332 gram/meter

Option: Therm Acoustic D40/40

Color: 



Double 80 Closed

NF-04805 Silver
NF-21805 Black
NF-56805 White

Double-sided aluminum profile

Application: Freestanding / Suspended

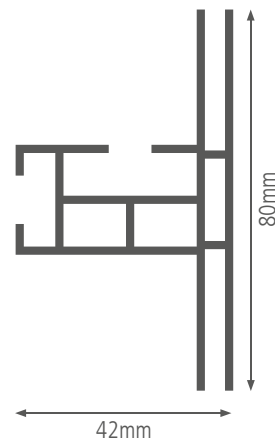
Depth: 80mm

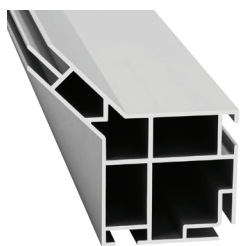
Length: 6150mm

Weight: 1332 gram/meter

Option: Therm Acoustic D40/40

Color: 





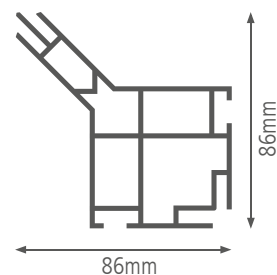
Carre 80

NF-04810 Silver

Double-sided aluminum profile

Application: Built-in
Depth: 86mm
Length: 6150mm
Weight: 2206 gram/meter
Option: Use in combination with the Double 80

Color: 



Cabinet 30

NF-04340 Silver

Built-in aluminum profile


Application: Built-in
Depth: 30mm
Length: 6150mm
Weight: 286g
Color: 

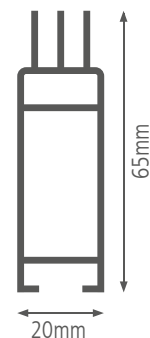


Cube 65

NF-04650 Silver

3D aluminum profile



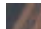
Application: 3D
Depth: 65mm
Length: 6150mm
Weight: 879 gram/meter
Color: 

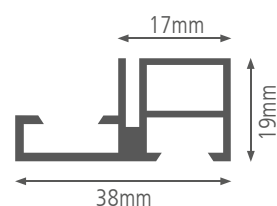


Simple 19 XL

NF-04190-XL Silver
 NF-70190-XL Oak
 NF-71190-XL Ebony
 NF-72190-XL Maple
 NF-73190-XL Teak
 NF-74190-XL Zebrano

Single-sided aluminum profile



Application: Wall mount
Depth: 19mm
Length: 6150mm
Weight: 641 gram/meter
Option: Therm Acoustic D20/10
Color:   

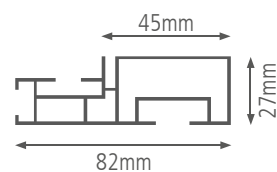


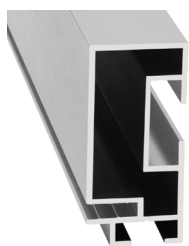
Heavy 27 XL

NF-04270-XL Silver
 NF-72270-XL Maple

Single-sided aluminum profile

Application: Wall mount
Depth: 27mm
Length: 6150mm
Weight: 1259 gram/meter
Option: Therm Acoustic D20/25
Color:  





Decor 27 XL 45

NF-03450-XL Brushed

NF-56450-XL White

NF-21450-XL Glossy Black

Single-sided aluminum profile

Application: Wall mount

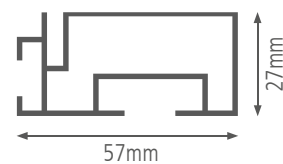
Depth: 27mm

Length: 6150mm

Weight: 892 gram/meter

Option: Therm Acoustic D20/25

Color:   




LED FRAMES

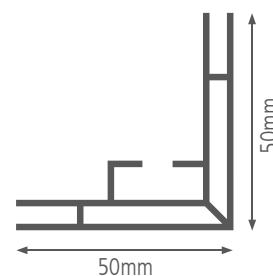


Lightbox 50

NF-04502 Silver
NF-12502 Black
NF-56502 White

Single-sided aluminum profile


Application: Wall mount
Depth: 50mm
Length: 6150mm
Weight: 968 gram/meter
Option: Dimmer
Color: 

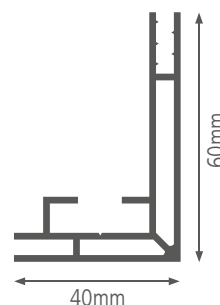


Lightbox 60

NF-21602 Black
NF-56602 White

Single-sided aluminum profile


Application: Wall mount
Depth: 60mm
Length: 6150mm
Weight: 970 gram/meter
Option: Dimmer
Color: 

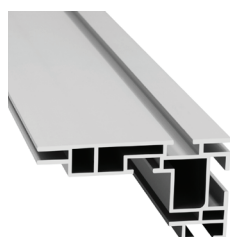
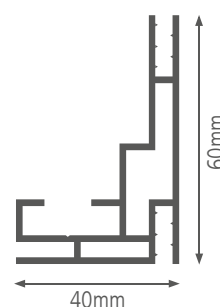


Lightbox 60 Groove

NF-04604 Silver

Single-sided aluminum profile


Application: Wall mount
Depth: 60mm
Length: 6150mm
Weight: 970 gram/meter
Option: Extra groove
Color: 

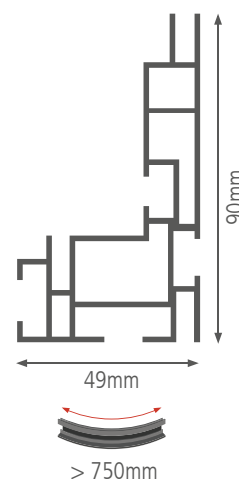


Lightbox 90

NF-04900 Silver
NF-21900 Black
NF-56900 White

Single-sided aluminum profile

Application: Freestanding / Suspended /
Wall mount
Depth: 90mm
Length: 6150mm
Weight: 1895 gram/meter
Advised: White backing for better
reflection of the light
Option: LED on stabilizer
Color: 





Lightbox 90 Closed

NF-04905 Silver

Single-sided aluminum profile

Application: Freestanding / Suspended /
Wall mount

Depth: 90mm

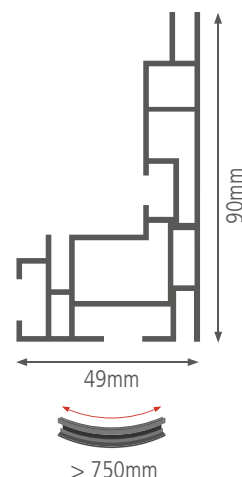
Length: 6150mm

Weight: 1895 gram/meter

Advised: White backing for better
reflection of the light

Option: LED on stabilizer

Color: 



Lightbox 120

NF-041200 Silver

NF-211200 Black

NF-561200 White

Single-sided aluminum profile

Application: Freestanding / Suspended /
Wall mount

Depth: 120mm

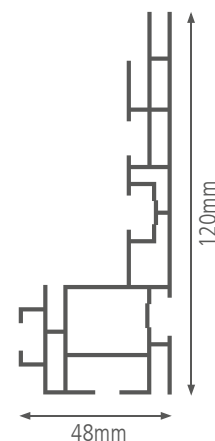
Length: 6150mm

Weight: 2221 gram/meter

Advised: White backing for better
reflection of the light

Option: LED on stabilizer

Color: 



Lightbox 120 Closed

NF-041205 Silver

NF-561205 White

Single-sided aluminum profile

Application: Freestanding / Suspended /
Wall mount

Depth: 120mm

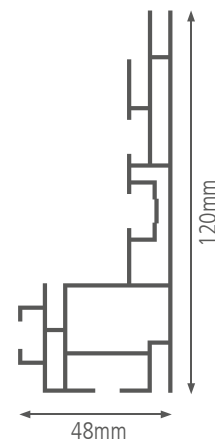
Length: 6150mm

Weight: 2221 gram/meter

Advised: White backing for better
reflection of the light

Option: LED on stabilizer

Color: 



Lightbox Double 100

NF-041000 Silver

NF-211000 Black

NF-561000 White

Double-sided aluminum profile

Application: Freestanding / Suspended

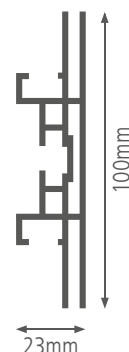
Depth: 100mm

Length: 6150mm

Weight: 1415 gram/meter

Option: LED on stabilizer

Colors: 





Lightbox Double 100 Dibond

NF-041005 Silver

NF-211005 Black

NF-561005 White

LED on Dibond aluminum profile

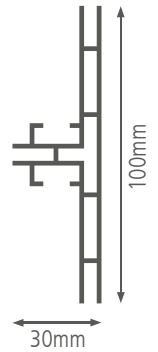
Application: Freestanding / Suspended

Depth: 100mm

Length: 6150mm

Weight: 1258 gram/meter

Colors: 



Lightbox Double 200

NF-042000 Silver

NF-212000 Black

NF-562000 White

Double-sided aluminum profile

Application: Freestanding / Suspended

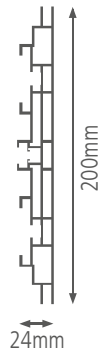
Depth: 200mm

Length: 6150mm

Weight: 3215 gram/meter

Option: LED on stabilizer

Colors: 





Heavy Powerled

AF90-015
AF90-016
AF90-017
AF90-035
AF90-040
AF90-045

Application: Lightbox 90 / Lightbox 90 Closed / Lightbox 120 / Lightbox 120 Closed / Lightbox Double 100 / Lightbox Double 200

Size: 470 x 250 x 150mm

LED Color: 5000-7000K White

Warranty: 2 years

License: PHILIPS

Lumen per m²: +/- 3100 lumen

AF90-015 PowerLED CREE 9x2.7W lens-24V 47cm

AF90-016 PowerLED CREE 3x2.7W lens-24V 15.7cm

AF90-017 PowerLED CREE 6x2.7W lens-24V 31.3cm

AF90-035 PowerLED CREE 9x2.1W lens-24V 47cm

AF90-040 PowerLED CREE 3x2.1W lens-24V 15.7cm

AF90-045 PowerLED CREE 6x2.1W lens-24V 31.3cm



FK2-C 2LEDs 24V

AF92-405

Application: Lightbox 50 / Lightbox 60 / Lightbox 60 Groove / Lightbox 120 / Lightbox 120 Closed

LED Color: 5000-7000K White

Power: 1.44W 24V

Warranty: 3 years



FK2-C 3LEDs 24V

AF92-407

Application: Lightbox 50 / Lightbox 60 / Lightbox 60 Groove / Lightbox 120 / Lightbox 120 Closed

LED Color: 5000-7000K White

Power: 2.88W 24V

Warranty: 3 years



FK2-C 4LEDs 24V

AF92-410

Application: Lightbox 50 / Lightbox 60 / Lightbox 60 Groove / Lightbox 120 / Lightbox 120 Closed

LED Color: 5000-7000K White

Power: 2.88W 24V

Warranty: 3 years



FK2-C 5LEDs 24V
AF92-412

Application: Lightbox 50 / Lightbox 60 / Lightbox 60 Groove / Lightbox 120 /
Lightbox 120 Closed

LED Color: 5000-7000K White

Power: 4.32W 24V

Warranty: 3 years



FK2-C 6LEDs 24V
AF92-415

Application: Lightbox 50 / Lightbox 60 / Lightbox 60 Groove / Lightbox 120 /
Lightbox 120 Closed

LED Color: 5000-7000K White

Power: 4.32W 24V

Warranty: 3 years



FK2-C 12LEDs 24V
AF92-420

Application: Lightbox 50 / Lightbox 60 / Lightbox 60 Groove / Lightbox 120 /
Lightbox 120 Closed

LED Color: 5000-7000K White

Power: 8.6W 24V

Warranty: 3 years



**LED Driver 30W
With Cable**
AF99-338-WC

Application: Lightbox 90 / Lightbox 90 Closed / Lightbox 120 /
Lightbox 120 Closed / Lightbox Double 100 /
Lightbox Double 200

Power: 24V 30W

Size: 247 x 29,8 x 16,7mm

Weight: 188g

Warranty: 5 years



LED Driver 60W
AF99-140

Application: Lightbox 90 / Lightbox 120 / Lightbox 120 Closed /
Lightbox Double 100 / Lightbox Double 200

Power: 24V 60W

Size: 230 x 30 x 20mm

Weight: 156g

Warranty: 5 years



LED Driver 60W Refined
AF99-340

Application: Lightbox 90 / Lightbox 90 Closed / Lightbox 120 /
Lightbox 120 Closed / Lightbox Double 100 /
Lightbox Double 200

Power: 24V 60W

Size: 298 x 29,8 x 16,7mm

Weight: 182g

Warranty: 5 years



**LED Driver 60W
Bulk Package**
AF99-340-BP

Application: Lightbox 90 / Lightbox 90 Closed / Lightbox 120 /
Lightbox 120 Closed / Lightbox Double 100 /
Lightbox Double 200

Power: 24V 60W

Size: 298 x 29,8 x 16,7mm

Weight: 151g

Warranty: 5 years



**LED Driver 60W
With Cable**
AF99-340-WC

Application: Lightbox 90 / Lightbox 90 Closed / Lightbox 120 /
Lightbox 120 Closed / Lightbox Double 100 /
Lightbox Double 200

Power: 24V 60W

Size: 298 x 29,8 x 16,7mm

Weight: 185g

Warranty: 5 years



LED Driver 75W
AF99-342

Application: Lightbox 90 / Lightbox 90 Closed / Lightbox 120 /
Lightbox 120 Closed / Lightbox Double 100 /
Lightbox Double 200

Power: 24V 75W

Size: 298 x 29,8 x 16,7mm

Weight: 182g

Warranty: 5 years



LED Driver 75W Bulk Package

AF99-342-BP

Application:	Lightbox 90 / Lightbox 90 Closed / Lightbox 120 / Lightbox 120 Closed / Lightbox Double 100 / Lightbox Double 200
Power:	24V 75W
Size:	298 x 29,8 x 16,7mm
Weight:	151g
Warranty:	5 years



LED Driver 75W With Cable

AF99-342-WC

Application:	Lightbox 90 / Lightbox 90 Closed / Lightbox 120 / Lightbox 120 Closed / Lightbox Double 100 / Lightbox Double 200
Power:	24V 75W
Size:	298 x 29,8 x 16,7mm
Weight:	180g
Warranty:	5 years



LED Driver 100W

AF99-142

Application:	Lightbox 90 / Lightbox 120 / Lightbox 120 Closed / Lightbox Double 100 / Lightbox Double 200
Power:	24V 100W
Size:	300 x 30 x 25mm
Weight:	194g
Warranty:	5 years



LED Driver 100W Refined

AF99-344

Application:	Lightbox 90 / Lightbox 90 Closed / Lightbox 120 / Lightbox 120 Closed / Lightbox Double 100 / Lightbox Double 200
Power:	24V 100W
Size:	298 x 29,8 x 16,7mm
Weight:	240g
Warranty:	5 years



LED Driver 100W Bulk Package

AF99-344-BP

Application:	Lightbox 90 / Lightbox 90 Closed / Lightbox 120 / Lightbox 120 Closed / Lightbox Double 100 / Lightbox Double 200
Power:	24V 100W
Size:	298 x 29,8 x 16,7mm
Weight:	211g
Warranty:	5 years



LED Driver 100W With Cable

AF99-344-WC

Application:	Lightbox 90 / Lightbox 90 Closed / Lightbox 120 / Lightbox 120 Closed / Lightbox Double 100 / Lightbox Double 200
Power:	24V 100W
Size:	298 x 29,8 x 16,7mm
Weight:	243g
Warranty:	5 years



LED Dimmer

AF92-220

Application:	Lightbox 90 / Lightbox 90 Closed / Lightbox 120 / Lightbox 120 Closed / Lightbox Double 100 / Lightbox Double 200
U (in):	12-12Vdc
I (out):	4Ax3CH Max 9A
P (out):	(0-36...62 W) x 3 CH
Size:	135 x 30 x 20mm
Weight:	48g
CE-marking:	European approved



Dimmer

AF92-230

Accessory



Application:	Lightbox 50 / Lightbox 60 / Lightbox 60 Groove
Size:	104 x 58 x 9mm
Weight:	70g

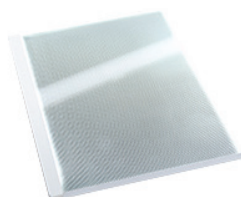


LED-Spot

AF99-310 Silver

AF99-312 Black

Application:	Double 44 / Double 49 / Double 50 / Double 80
LED Color:	7000K White
Power:	8V 10W
Lumen:	+/-1100
Size:	475 x 14 x 5mm
Weight:	316g
Color:	 



LED Guided Plate

AF22-0400

Application:	Slim 33
Size:	20 standard sizes max. 1000x1500mm
LED Color:	5000-7000K White
Power:	12V
Warranty:	2 years
License:	PHILIPS


ADDITIONAL FRAMES

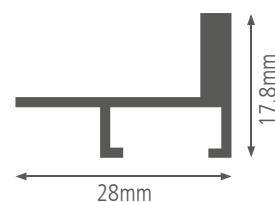


L-Shape 17,8

NF-04178 Silver

Standard aluminum profile


Application: Wall mount
Depth: 17,8mm
Length: 6150mm
Weight: 202 gram/meter
Color: 

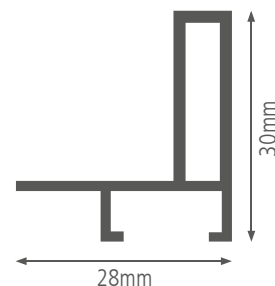


L-Shape 30

NF-04300 Silver
 NF-21300 Black
 NF-70300 Oak
 NF-71300 Ebony
 NF-72300 Maple
 NF-73300 Teak
 NF-74300 Zebrano

Standard aluminum profile


Application: Wall mount
Depth: 30mm
Length: 6150mm
Weight: 300 gram/meter
Option: Available in different colors and wood veneer
Color: 

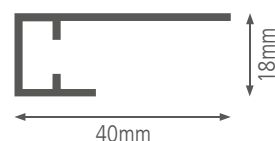


Panel Hanging 18

NF-04182 Silver

Invisible aluminum profile


Application: Wall mount
Depth: 18mm
Length: 6150mm
Weight: 357 gram/meter
Color: 

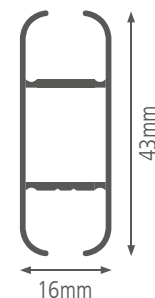


Cord 43

NF-04434 Silver

Keder aluminum profile

Application: Suspended
Depth: 43mm
Length: 6150mm
Weight: 462 gram/meter
Color: 



LOCKSETS + EXTENSIONSETS

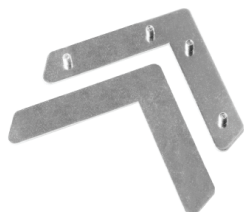


Lockset Simple
FK-0210 Silver

Application: Eco 15 / Simple 19 / Simple 19 XL / Slim 25 / Slim 33 /
L-shape 17,8 / L-shape 30 / Panel hanging 18

Material: Steel

Weight: 71g



Lockset Heavy
FK-0200 Silver

Application: Heavy 27 / Heavy 27 XL / Double 44 / Double 44 Closed /
Double 49 / Double 49 Closed / Double 50 / Double 50 Closed /
Double 80 / Double 80 Closed / Lightbox 50 / Lightbox 60 /
/ Lightbox 60 Groove / Lightbox 90 / Lightbox 90 Closed /
Lightbox 120 / Lightbox 120 Closed

Material: Steel

Weight: 732g



Lockset Heavy Short
FK-0205 Silver

Application: Heavy 27 / Heavy 27 XL / Double 44 / Double 44 Closed /
Double 49 / Double 49 Closed / Double 50 / Double 50 Closed /
Double 80 / Double 80 Closed / Lightbox 50 / Lightbox 60 /
/ Lightbox 60 Groove / Lightbox 90 / Lightbox 90 Closed /
Lightbox 120 / Lightbox 120 Closed

Material: Steel

Weight: 318g



Locks Stabilizer
FK-0220 Silver

Application: Stabilizer 43

Material: Steel

Weight: 101g



Locks Stabilizer 45°
FK-0222 Silver

Application: Stabilizer 43

Material: Steel

Weight: 131g




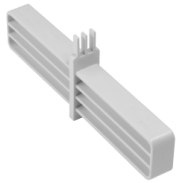
**Cube Corner 65
Connector**
FK-0710 Silver

Application: Cube 65

Material: Molded plastic

Weight: 103g

Color: 



Cube Extension 65 Connector

FK-0715 Silver

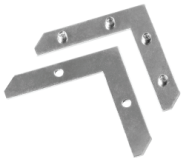
Application: Cube 65
Material: Molded plastic
Weight: 56g



Lockset Cube Stabilizer

FK-0270 Silver

Application: Cube 65
Material: Steel
Weight: 72g



Lockset 100

FK-0240 Silver

Application: Lightbox Double 100
Material: Steel
Weight: 476g



Lockset 200

FK-0230 Silver

Application: Lightbox Double 200
Material: Steel
Weight: 3415g



Lockset 120

FK-0250 Silver

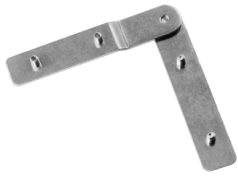
Application: Lightbox 120 / Lightbox 120 Closed
Material: Steel
Weight: 997g



Lockset Hanging Profile

FK-0260 Silver

Application: Panel hanging 18 / Cabinet 30
Material: Steel
Weight: 71g



Flexible Lockset

FK-0430 Silver

Application: Heavy 27 / Double 44 / Double 44 Closed / Double 49 /
Double 49 Closed / Double 50 / Double 50 Closed / Double 80 /
Double 80 Closed / Carre 80 / Heavy 27 XL / Decor 27 XL 45 /
Lightbox 50 / Lightbox 60 / Lightbox 60 Groove / Lightbox 90 /
Lightbox 90 Closed / Lightbox 120 / Lightbox 120 Closed

Material: Steel

Weight: 142g



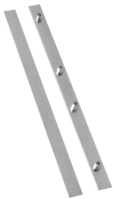
Extensionset Heavy

FK-0500 Silver

Application: Heavy 27 / Double 44 / Double 44 Closed / Double 49 /
Double 49 Closed / Double 50 / Double 50 Closed / Double 80 /
Double 80 Closed / Carre 80 / Heavy 27 XL / Decor 27 XL 45 /
Lightbox 50 / Lightbox 60 / Lightbox 60 Groove / Lightbox 90 /
Lightbox 90 Closed / Lightbox 120 / Lightbox 120 Closed

Material: Steel

Weight: 370g



Extensionset Eco/Simple

FK-0510 Silver

Application: Eco 15 / Simple 19 / Simple 19 XL / Slim 25 / Slim 33 /
L-shape 17,8 / L-shape 30

Material: Steel

Weight: 159g



Extensionset 100

FK-0520 Silver

Application: Carre 80 / Lightbox Double 100

Material: Steel

Weight: 159g



Extensionset 200

FK-0530 Silver

Application: Lightbox Double 200

Material: Steel

Weight: 1877g



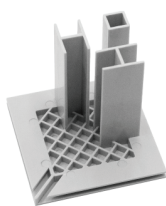
Extensionset Aluminum keeper

FK-0532 Silver

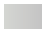
Application: Heavy 27 / Double 44 / Double 44 Closed / Double 49 /
Double 49 Closed / Double 50 / Double 50 Closed / Double 80 /
Double 80 Closed / Carre 80 / Heavy 27 XL / Decor 27 XL 45 /
Lightbox 50 / Lightbox 60 / Lightbox 60 Groove / Lightbox 90 /
Lightbox 90 Closed / Lightbox 120 / Lightbox 120 Closed

Material: Steel

Weight: 230g



Endcap Carre
FK-0725 Silver

Application: Carre 80
Material: Molded plastic
Weight: 56g
Color: 



Lockset Carre
FK-0280 Silver

Application: Carre 80
Material: Steel
Weight: 187g



Cord 43 Endcap
FK-0604 Silver

Application: Cord 43
Material: Molded plastic
Weight: 1g



Cord 43 Connector
FK-0605 Silver

Application: Cord 43
Material: Steel
Weight: 34g



Cord 43 Hinged Connector
FK-0606 Silver

Application: Cord 43
Material: Steel
Weight: 94g



Cord 43 144mm R2000 Connector
FK-0607 Silver

Application: Cord 43
Material: Steel
Weight: 94g



Cord 43 140mm Connector
FK-0608 Silver

Application: Cord 43
Material: Steel
Weight: 95g

BASEPLATES



Baseplate Simple

FK-0100 Silver

Application: Double 44 / Double 49 / Double 50 / Double 80

Material: Aluminum

Size: 380 x 50 x 10mm

Weight: 405g

Color:



Baseplate Slim

FK-0105 Silver
FK-2105 Black
FK-5605 White

Application: Double 44 / Double 49 / Double 50 / Double 80 / Lightbox
Double 100

Material: Steel

Size: 380 x 75 x 3mm

Weight: 675g

Color:



Baseplate Slim Refined

FK-0107 Silver

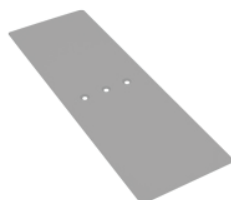
Application: Double 44 / Double 49 / Double 50 / Double 80 / Lightbox
Double 100

Material: Aluminum

Size: 380 x 75 x 8mm

Weight: 630g

Color:



Baseplate Heavy

FK-0110 Silver
FK-2110 Black
FK-2510 White

Application: Double 44 / Double 49 / Double 50 / Double 80 / Lightbox
Double 100

Material: Steel

Size: 450 x 150 x 3mm

Weight: 1085g

Color:



Baseplate Heavy Refined

FK-0112 Silver

Application: Double 44 / Double 49 / Double 50 / Double 80 / Lightbox
Double 100

Material: Steel

Size: 450 x 150 x 8mm

Weight: 1560g

Color:



Baseplate Heavy XL

FK-0176 Silver

Application: Extreme sizes, customized advice

Material: Steel

Size: 800 x 200 x 3mm

Weight: 6400g

Color:



Baseplate D200

FK-0140 Silver

Application: Lightbox Double 200

Material: Steel

Size: 600 x 200 x 3mm

Weight: 2820g

Color:



Baseplate Side

FK-0120 Silver

FK-2120 Black

FK-5620 White

Application: Double 44 / Double 49 / Double 50 / Double 80 / Lightbox 90 /
Lightbox 120

Material: Steel

Size: 450 x 150 x 3mm

Weight: 1880g

Color:



Baseplate Side Heavy

FK-0130 Silver

FK-2130 Black

FK-5630 White

Application: Double 44 / Double 49 / Double 50 / Double 80 / Lightbox 90 /
Lightbox 120

Material: Steel

Size: 600 x 200 x 3mm

Weight: 3075g

Color:



Baseplate Side Heavy XL

FK-0174 Silver

Application: Extreme sizes, customized advice

Material: Steel

Size: 800 x 200 x 3mm

Weight: 7500g

Color:



Baseplate Delta

FK-0170 Silver

FK-2170 Black

FK-5670 White

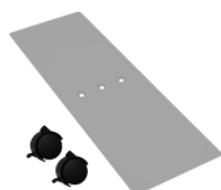
Application: Double 44 / Double 49 / Double 50 / Double 80 / Lightbox 90 /
Lightbox 120 / Lightbox Double 100

Material: Steel

Size: 200 x 490 x 3mm

Weight: 400g

Color:



Baseplate Wheel

FK-0180 Silver

Application: Double 44 / Double 49 / Double 50 / Double 80

Material: Steel

Size: 450 x 150 x 3mm

Weight: 1085g

Color:



Baseplate Set (L&R) High
FK-0160 Silver

Application: Double 44 / Double 49 / Double 50 / Double 80

Material: Steel

Size: 455 x 750 x 30mm

Weight: 1995g

Color: 

ADDITIONAL



**Aluminum Sample Box
with 3 boxes**
FK-9994

Contents: Eco 15 / Simple 19 / Slim 25 / Heavy 27 / Decor 27 XL 45 / Slim 33 / Double 44 (closed) / Double 49 (closed) / Double 50 (closed) / Stabilizer 43 / Double 80 (closed) / Cube 65 / Carre 80 / Cabinet 30 / Cabinet 200 / Cord 43 / Quatro 50 / Outdoor 70 / Stabilizer 43 / L-shape 17,8 / L-shape 30 / Panel Hanging 18 / Lightbox 50 / Lightbox 60 Groove / Lightbox 90 (closed) / Lightbox 120 (closed) / Lightbox Double 100 / Lightbox Double 100 Dibond / Lightbox Double 200

Material: Aluminum

Color:



Sample Box
FK-9990

Contents: Eco 15 / Simple 19 / Heavy 27 / Double 44 / Double 44 Closed / Double 80 / Cabinet 30 / Cube 65 / Lightbox 90 / Lightbox 120 / Lightbox Double 100 / Lightbox Double 200 / Slim 33 / L-shape 17,8 / L-shape 30 / Panel hanging 18

Material: Aluminum

Color:



Stabilizer 43
NF-04438 Silver
NF-56438 White

Application: Slim 25 / Heavy 27 / Double 44 / Double 44 Closed / Double 80 / Double 80 Closed / Carré 80 / Lightbox 90 / Lightbox 90 Closed / Lightbox 120 / Lightbox 120 Closed / Lightbox Double 100 / Lightbox Double 200

Material: Aluminum

Length: 6150mm

Depth: 43mm

Weight: 425 gram/meter

Color:



Dibond Connector
FK-56280 White

Application: Lightbox 50 / Lightbox 60 / Lightbox 60 Groove

Material: Aluminum

Weight: 19 gram/meter

Color:



Blind Frame Connector
FK-8990 Silver

Contents: Lightbox 50 / Lightbox 60

Material: Molded plastic

Depth: 15mm

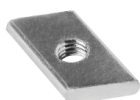
Color:



Alu Nut
FK-0300 Silver

Application: Double 44 / Double 49 / Double 50 / Double 80 / Cube 65 /
Lightbox 90 / Lightbox 120 / Lightbox Double 100 /
Lightbox Double 200

Material: Steel



Steel Nut
FK-0306 Silver

Application: Mounting profiles and baseplates

Material: Steel



M6 Screw
FK-0310 Silver
FK-0320 Silver
FK-0322 Silver
FK-0330 Silver

Sizes:

FK-0310	12.55mm
FK-0320	8.5mm
FK-0322	7.5mm
FK-0330	9mm

Material: Steel



Therm Acoustic D40/40
FK-8920

Application: Sound absorbing, behind print

Thickness: 40mm

Density: 40 kilo/m³

Absorption: Noise Reduction Coefficient = 0,75
 $a_w = 0,70$ (absorption class C)

Fire resistant test: DIN 4102 B1



Therm Acoustic D20/25
FK-8910

Application: Sound absorbing, behind print

Thickness: 25mm

Density: 20 kilo/m³

Absorption: Noise Reduction Coefficient = 0,45
 $a_w = 0,45$ (absorption class D)

Fire resistant test: DIN 4102 B1



Therm Acoustic D20/10
FK-8930

Application: Sound absorbing, behind print

Thickness: 10mm

Density: 20 kilo/m³

Fire resistant test: DIN 4102 B1



Wallmount Simple

FK-0400 Silver

Application: Eco 15 / Slim 25 / Simple 19 / Simple 19 XL / Heavy 27 / Heavy 27 XL

Material: Steel

Size: 30 x 30 x 15mm

Color: 



Wallmount Heavy

FK-0410 Silver

Application: Slim 25 / Heavy 27 / Heavy 27 XL / Lightbox 90 / Lightbox 90 Closed

Material: Steel

Size: 40 x 40 x 20mm

Color: 



Wallmount 120

FK-0414 Silver

Application: Lightbox 120

Material: Steel

Size: 40 x 40 x 25mm

Color: 



Wallmount Bracket

FK-0440 Silver

Application: Lightbox Double 100

Material: Steel

Size: 200 x 70 x 50mm

Color: 




Ceiling Mount

FK-0360 Silver

Application: Double 44 / Double 49 / Double 50 / Double 80 / Cube 65 / Lightbox 90 / Lightbox 120 / Lightbox Double 100 / Lightbox Double 200

Material: Steel

Color: 



Ceiling Mount Slim

FK-0420 Silver


Application: Slim 25

Material: Steel

Color: 



Ceiling Mount Heavy
FK-0425 Silver

Application: Heavy 27
Material: Steel
Color: 



Suspension Cable
FK-7900

Application: Double 44 / Double 49 / Double 50 / Double 80 / Lightbox 90 /
Lightbox 120 / Lightbox Double 100 / Lightbox Double 200
Material: Steel
Weight: Up to 50kg SWL
Length: 4 meters



Frame Connector Alu
FK-0600 Silver

Application: Double 44 / Double 49 / Double 50 / Double 80 / Lightbox 90 /
Lightbox 120
Material: Steel
Size: 80 x 30mm



**Frame Connector
90 Degrees**
FK-0630 Silver

Application: Double 44 / Double 49 / Double 50 / Double 80 / Lightbox 90 /
Lightbox 120
Material: Steel
Weight: 135g
Degrees: 90°



**Frame Connector
135 Degrees**
FK-0620 Silver

Application: Double 44 / Double 49 / Double 50 / Double 80 / Lightbox 90 /
Lightbox 120
Material: Steel
Weight: 151g
Degrees: 135°



**Frame Connector
150 Degrees**
FK-0615 Silver

Application: Double 44 / Double 49 / Double 50 / Double 80 / Lightbox 90 /
Lightbox 120
Material: Steel
Weight: 152g
Degrees: 150°



Frame Connector 180 Degrees

FK-0640 Silver

Application:	Double 44 / Double 49 / Double 50 / Double 80 / Lightbox 90 / Lightbox 120
Material:	Steel
Weight:	109g
Degrees:	180°



T-Frame Connector

FK-0650 Silver

Application:	Double 44 / Double 49 / Double 50 / Double 80 / Lightbox 90 / Lightbox 120
Material:	Steel
Weight:	195g



Cross Frame Connector

FK-0660 Silver

Application:	Double 44 / Double 49 / Double 50 / Double 80 / Lightbox 90 / Lightbox 120
Material:	Steel
Weight:	259g



Triangle Connector

FK-0670 Silver

Application:	Double 44 / Double 49 / Double 50 / Double 80 / Lightbox 90 / Lightbox 120
Material:	Steel
Weight:	59g



Quick Frame Connector

FK-0665 Silver

Application:	Double 44 / Double 80
Material:	Steel
Weight:	42g




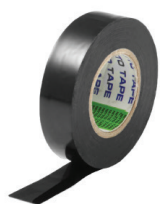
Cleathanger

FK-8020 Silver

FK-8050 Silver

FK-8120 Silver

Application:	L-shape 17,8 / L-shape 30 / Panel Hanging 18	
Material:	Steel	
Size:	FK-8020	20cm
	FK-8050	50cm
	FK-8120	120cm
Color:		



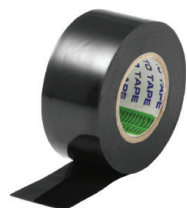
Nitto Tape 15x30

FK-8815

Application: L-shape 17,8 / L-shape 30 / Panel Hanging 18

Size: 15 x 30mm rol

Material: Foam tape acrylic glue



Nitto Tape 30x30

FK-8830

Application: L-shape 17,8 / L-shape 30 / Panel Hanging 18

Size: 30 x 30mm rol

Material: Foam tape acrylic glue



Kit Extreme Tack

FK-8932

Application: Therm Acoustic D40/40, D20/25 and D20/10

Volume: 310ml

Material: Mounting adhesive



Corner Protector 44

FK-0810

Application: Double 44

Material: Plastic

Color: Transparent